



COMPLETE ELISA KITS

FIND YOUR TARGET, CHOOSE YOUR APPLICATION

Tired of spending time developing ELISA assays that fail? We offer pre-validated, turn-key ELISA kits with pre-coated plates that offer reliable and reproducible results for those measuring their analyte of interest in a number of complex sample types at the pg/ml level. Our robust portfolio includes over 1,100 highly sensitive and specific ELISA kits that are backed by award winning technical resources and the Bioguarantee program.

TYPES OF APPLICATIONS

SANDWICH ELISA KITS

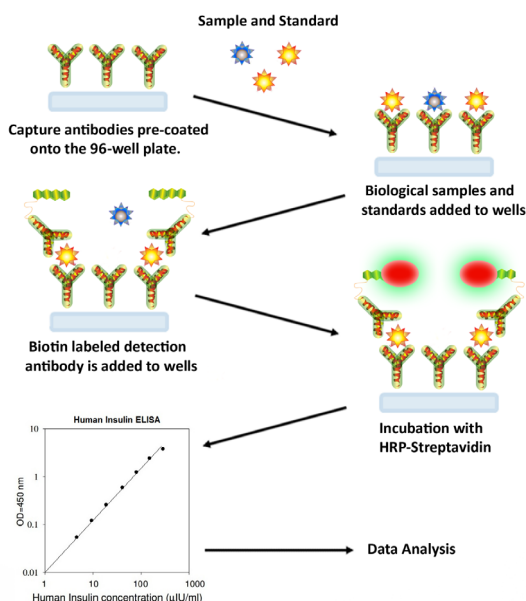
Quantitative, Sandwich ELISA for detection of soluble factors in a variety of species.

Features

- Pre-coated 96 well plate
- Strip plate format minimizes waste
- Highly sensitive and specific
- Reproducible and reliable
- Optimized for serum, plasma, urine and cell culture medium
- Complete kit includes all necessary reagents
- Hundreds of selections

How It Works

Sigma's Sandwich ELISAs (Enzyme-Linked Immunosorbent Assay) employ specific capture antibodies coated on a 96-well plate. Standards and samples are pipetted into the wells; the target protein in the standards and samples binds to the immobilized antibody. The wells are washed and the biotin-labeled detection antibody is then added. After washing away the unbound biotinylated antibodies, HRP-conjugated streptavidin is pipetted to the wells, followed by a colorimetric substrate solution. The intensity of color development in the wells is proportional to the amount of target protein bound.



EIA KITS

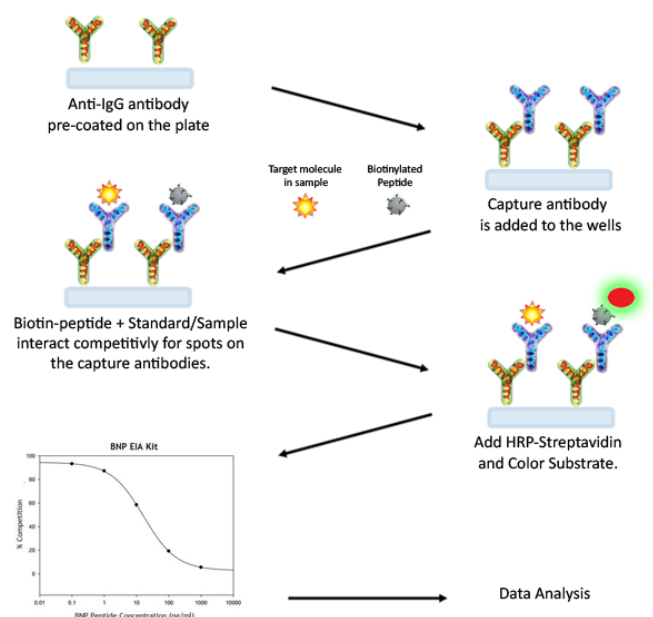
Quantitative, competitive ELISA for detection of unique biomarkers in a variety of species.

Features

- Offers broad species reactivity
- Strip plate format minimizes waste
- Highly sensitive and specific
- Reproducible and reliable
- Complete kit includes all necessary reagents
- Optimized for serum, plasma, and cell culture medium

How It Works

The samples and standards, which are spiked with biotinylated peptide, are pipetted into the assay plate; the target protein and the labeled peptide interact competitively with the capture antibody. After washing, the bound biotin-peptide then interacts with streptavidin-HRP, producing a color development reaction. The intensity of colorimetric signal is directly proportional to the amount of biotin-peptide and inversely proportional to the amount of target protein in the samples.



CELL-BASED PROTEIN PHOSPHORYLATION ELISA

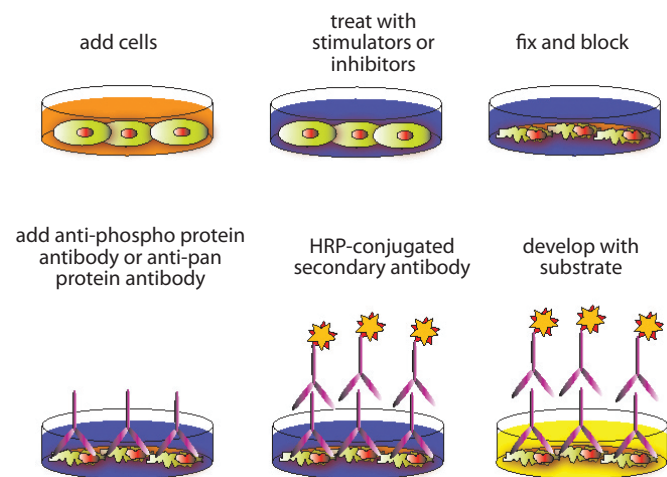
Rapid, convenient and sensitive assay kits for measuring relative amounts of protein phosphorylation

Features

- Measures relative levels of protein phosphorylation
- Features human, mouse or rat cell lines
- Screen response to various treatments or inhibitors (siRNA, drugs, etc)
- Eliminates excess time and effort preparing

How It Works

In the Cell-Based Protein Phosphorylation ELISA kit, cells are seeded onto a 96-well tissue culture plate. After treatments (with inhibitors or activators), cells are fixed and an Anti-Phosphoprotein-Specific Antibody or Anti-Pan Specific Antibody is added to the wells. The wells are then washed and HRP-conjugated secondary antibody is added. Finally, colorimetric detection (OD 450) is performed with TMB substrate solution.



PHOSPHORYLATION ELISA KITS

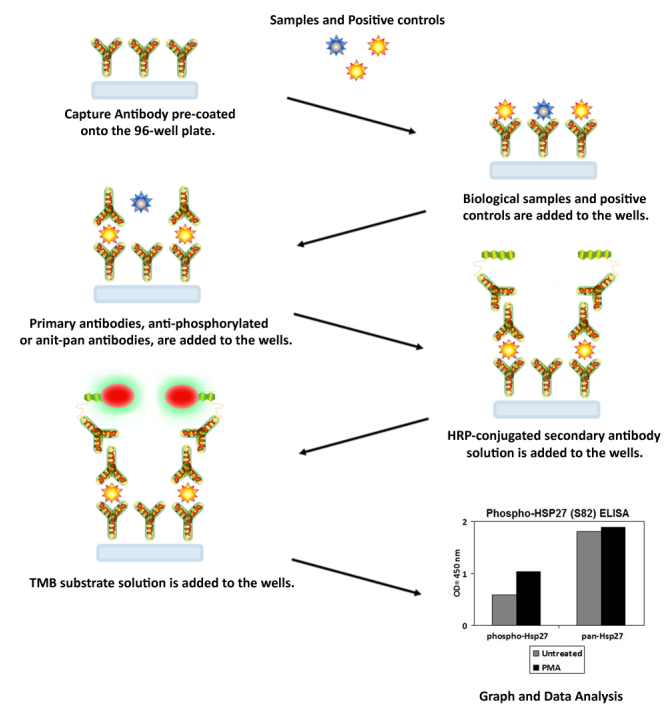
Semi-Quantitative, Sandwich ELISAs for detection of phosphorylated proteins in cell & tissue lysates detect pathway activation without Western blots.

Features

- Quantitatively measures phosphorylation levels in cell or tissue lysates
- Offers site-specific detection
- Detects both phosphorylated and total protein
- Screens multiple lysates without Western blot analysis
- Minimal hands-on time; convenient and non-radioactive
- High sensitivity; comparable to Westerns

How It Works

Phosphorylation ELISA Kits are very rapid, convenient and sensitive assay kits that can monitor the activation or function of important biological pathways in cell lysates. By determining phosphorylated protein in your experimental model system, you can verify pathway activation in your cell lysates. You can simultaneously measure numerous different cell lysates without spending excess time and effort in performing a Western blot analysis.



AREA OF INTEREST

All ELISA kits below are in Sandwich ELISA format and can be found in the table on the following pages. They are categorized here by area of interest for your convenience.

Sandwich ELISA Kits by Area

Drugs of Abuse

- Morphine Specific
- Amphetamine
- Barbiturates
- Benzodiazepines
- Cannabinoids
- Cocaine/BE
- Cotinine
- Fentanyl
- Human Growth Hormone
- LSD
- Methamphetamine
- Opiates
- PCP
- Tricyclics

Steroid Markers

- ACTH
- Androstenedione
- Cortisol
- Cortisol (Saliva)
- DHEA-S
- Estradiol
- Free Estradiol
- Total Estrogens
- Progesterone
- Progesterone (Saliva)
- Testosterone
- Testosterone

Autoimmune

- ANA Screen IgG
- Cardiolipin IgA
- Cardiolipin IgG
- Cardiolipin IgM
- Cardiolipin Total Ab
- dsDNA IgG
- Mitochondrial (MA) Ab
- RNP/Sm IgG
- Scl-70
- Sm IgG
- SSA IgG
- SSB IgG

To learn more about ELISA Kits, visit sigma-aldrich.com/elisa

Infectious Disease

- Anthrax IgG
- Brucella IgG
- Brucella IgM
- Chlamydia pneumonia IgA
- Chlamydia pneumonia IgG
- Chlamydia pneumonia IgM
- Chlamydia trachomatis IgA
- Chlamydia trachomatis IgG
- Chlamydia trachomatis IgM
- CMV IgG
- CMV IgM
- Dengue Virus IgG
- Dengue Virus IgM
- EBV-VCA IgA
- EBV-VCA IgG
- EBV-VCA IgM
- H. Pylori IgA
- H. Pylori IgG
- H. Pylori IgM
- HSV-1 IgG
- SE120065 HSV-1 IgM HSV-1 IgM
- HSV-2 IgG
- HSV-2 IgM
- SE120075 Measles IgG Measles IgG
- Measles IgM
- Mumps IgG
- Mumps IgM
- Mycoplasma IgG
- Mycoplasma IgM
- Rubella IgG
- Rubella IgM
- Salmonella IgG
- Salmonella IgM
- Toxoplasma IgA
- Toxoplasma IgG
- Toxoplasma IgM
- Treponema pallidum IgG
- Treponema pallidum IgM
- Treponema pallidum Total
- VZV IgG
- VZV IgM

Food Testing

- Rapid Aflatoxin B1
- Aflatoxin B1 Low Matrix
- Rapid Aflatoxin M1
- High Sensitivity Aflatoxin M1
- Aflatoxin M1 for Urine
- Total Aflatoxin
- Total Aflatoxin Low Matrix (Quan.)
- Total Aflatoxin Low Matrix (Qual.)
- Deoxynivalenol
- Fumonisin
- Ochratoxin A for Alcoholic Beverages
- Ochratoxin A for coffee, cocoa, and spices
- Ochratoxin A for Human and Animal Serum and Milk
- Ochratoxin A
- Ochratoxin A for wine
- Zearalenone

BIOGUARANTEE PROGRAM

Peace of Mind with Your Antibody Purchase

We are passionate about biology and we know your resources are precious. That is why we offer our Antibody Bioguarantee on antibody purchases. We invite you to evaluate our antibody products with complete peace of mind. If our antibody does not perform in your application of interest or species specificity – no matter what – we will issue a full credit or replacement antibody product – **Bioguaranteed**.*

To learn more, visit sigma.com/bioguarantee



How It Works

1. Place your antibody order online or call 800-325-3010.
2. Following your evaluation, if you are not completely satisfied with the performance of the antibody, complete our Antibody Bioguarantee Form.
3. Our Technical Service team will contact you within 48 hours to review the details of your experiment and complete your claim.*

***Guidelines:** Experimental results must be submitted via the Antibody Bioguarantee Form within 12 months of the date of purchase. All required fields of the Antibody Bioguarantee Form must be completed. Refunds and replacements contingent to claim review by technical service team. Credit covers the cost of antibody. Product replacements depend on product availability. Antibodies purchased in bulk order or for resale purposes are expressly excluded from the Bioguarantee. This Bioguarantee is non-transferable and void upon resale of antibody.

ELISA Kits Coverage by Application and Species

Target Molecule	Application	Species	Target Molecule	Application	Species	Target Molecule	Application	Species
(dsDNA) IgG	●	H	Barbiturate	●	H	CGB	●	H
(hGH)	●	H	BCAM	●	H	Chemerin	●	H,M
(NSE)	●	H	BCL2-L-2	●	M,R	Chitinase 3-like	●	H
(Parathyroid Hormone)	●	H	Bclw	●	H	Chlamydia Pneumoniae IgA	●	H
25(OH) Vitamin D	●	H	BCMA	●	M	Chlamydia Pneumoniae IgG	●	H
2B4	●	H	BDNF	●	H,R	Chlamydia Pneumoniae IgM	●	H
4BB	●	M	Benzodiazepines	●	H	Chlamydia Trachomatis IgA	●	H
6Ckine	●	H,M	Beta-2 Microglobulin	●	H	Chlamydia Trachomatis IgG	●	H
A2M	●	H	beta-NGF	●	H,R	Chlamydia Trachomatis IgM	●	H
ACE	●	M	bFGF	●	H,M,R	Cholecystokinin	●	H,M,R
Acpr30	●	H	BID	●	H	Chordin	●	M
Activin A	●	H,R	BIGH3	●	H	Chromogranin A (CgA)	●	H
ADAM9	●	H	BIRC3	●	M,R	ciAP2	●	H
Adiponectin	●	H	BIRC7	●	M,R	CINC-1	●	R
Adiponutrin	●	H,M,R	BLC	●	H,M	CINC-2 alpha	●	R
ADIPOQ / Adiponectin	●	H,M,R	BLK/Tyrosine-protein Kinase Blk	●	H	CINC-3	●	R
Adipsin	●	H	BMP-2	●	H	CKbeta8	●	H
Adrenocorticotropin	●	H	BMP-3	●	H	CKMB	●	H
Adrenocorticotropin Hormone	●	M,R	BMP-4	●	H	Clusterin	●	H,M
aFGF	●	H	BMP-5	●	H	CNTF	●	H
AFP	●	H	BMP-6	●	H	CNTF	●	R
AgRP	●	R	BMP-7	●	H	CoagFIII	●	H
AgrRP	●	H	BMX/Cytoplasmic Tyrosine-protein Kinase BMX	●	H	Cocaine/Benzoylcegonine	●	H
Akt (pSer473)	●	H,M,R	BNP	●	H	Cocaine and Amphetamine	●	H,M,R
Akt (pSer473)/pan-Akt	●	H,M,R	Brain Natriuretic Peptide	●	H,M,R	COCO	●	H
Albumin	●	H	Brucella IgG	●	H	Cortisol	●	H,M,R
ALCAM	●	H	Brucella IgM	●	H	Cortisol Saliva	●	H
ALK/ALK Tyrosine Kinase Receptor	●	H	BTC	●	H,M	Cotinine	●	H,M,R
ALK1	●	M	BTK/Tyrosine-protein Kinase BTK	●	H	C-Peptide	●	H,M,R
Alpha 1-Antichymotrypsin	●	H	CA-125	●	H	C-Reactive Protein (CRP)	●	H
Alpha-Fetoprotein (AFP)	●	H	CA15-3	●	H	CRG-2	●	M
AMICA	●	H	CA19-9	●	H	Cripto1	●	H
Amphetamine	●	H	CA9	●	H	CRP	●	H,R
Amyloid beta 1-40	●	H	Calbindin	●	H	CRTAM	●	H
ANA Screen	●	H	CALCA	●	H	CSF1R / Macrophage Colony-stimulating Factor 1 Receptor	●	H
ANDROSTENEDIONE	●	H	Cannabinoids (THCA/CTHC)	●	H	CSF2	●	C,Rh
ANG	●	H	Carcinoembryonic Antigen (CEA)	●	H	CSK / Tyrosine-protein Kinase CSK	●	H
Angiostatin	●	H	Cardiolipin IgA	●	H	CT-1	●	H,M
Angiotensin	●	H	Cardiolipin IgG	●	H	CTACK	●	H,M
Angiotensin II	●	H,M,R	Cardiolipin IgM	●	H	CTLA4	●	H,M
ANGPT1	●	H	Cathepsin S	●	H	CXCL14	●	H
ANGPT2	●	H	CathepsinL	●	H	CXCL15	●	M
ANGPT4	●	H	CCC5a	●	H,M	CXCL16	●	H,M
ANGPTL3	●	H,M	CCL2	●	P	CXCL9	●	P
ANGPTL4	●	H	Ccl20	●	R	Cystatin C	●	H,M
Anthrax Protective Antigen	●	H	CCL28	●	H	Cystatin C	●	R
Antigen (f-PSA)	●	H	CCL3L1	●	R	Cytomegalovirus (CMV) IgG	●	H
Apelin	●	H,M,R	CCL4	●	M,P	Cytomegalovirus (CMV) IgM	●	H
Apo	●	H	CCL6	●	M	DAN	●	H,M
ApoA	●	H	CD14	●	H	DcR3	●	H
ApoA2	●	H	CD163	●	H	D-Dimer	●	H
ApoB	●	H	CD200	●	H	Decorin	●	H,M
ApoB-100	●	H	CD23	●	H	Dengue Virus IgG	●	H
ApoC1	●	H	CD26	●	H	Dengue Virus IgM	●	H
ApoC2	●	H	CD27	●	M	DIABLO	●	M,R
ApoC3	●	H	CD30	●	H,M	Dkk-1	●	H,M
Apo-D	●	H	CD30 L	●	M	Dkk-3	●	H
ApoE	●	H	CD32A	●	M	Dkk-4	●	H
ApoE2	●	H	CD36	●	M	DLL1	●	H
ApoE3	●	H	CD40	●	H,M,R	DLL4	●	M
ApoE4	●	H	CD40 Ligand	●	H,M,R	DMP1	●	H
Apo-M	●	H	CD48	●	M	Double Stranded DNA	●	H
AREG	●	H,M	CD6	●	M	DPPIV	●	M
Atrial Natriuretic Peptide	●	H,M,R	CD79alpha	●	H	DR6	●	H
Axl	●	H,M	CD80	●	H,M	Dtk	●	H,M
B2M	●	H	CD86	●	R	EBV-VCA IgA	●	H
B7-H4	●	H	CD97	●	H	EBV-VCA IgG	●	H
BACE-1	●	H	CEA	●	H	EBV-VCA IgM	●	H
BAD	●	H,M	CEACAM-1	●	H	ECadherin	●	H
BAFF	●	H						
BAFFR	●	M						

Sandwich	●	Phosphorylation	●	Equine	E	Mouse	M	Rhesus	Rh
EIA	●	Bovine	B	Feline	F	Porcine	P	Sheep	Z
Cell-Based	●	Canine	C	Human	H	Rat	R	Sigmodon	S

Target Molecule	Application	Species	Target Molecule	Application	Species	Target Molecule	Application	Species
E-Cadherin	●	M	FcgRIIBC	●	H	Helicobacter pylori IgG	●	H
EDAA2	●	H	Fentanyl	●	H	Helicobacter pylori IgM	●	H
EDAR	●	M	FER/Tyrosine-protein Kinase Fer	●	H	Hemoglobin	●	H
EGF	●	H,M,R	Ferritin	●	H	HGF	●	H,M
EGFR	●●●	H	Fetuin A	●	H,M	HGF	●	C
EGFR (multi-site) ELISA Sample Kit	●	H,M,R	FetuinB	●	H	HGFR	●	H,M
EGFR (pSer1070)	●●	H	FGF-19	●	H	Hormone (ACTH)	●	H
EGFR (pSer1070)/pan-EGFR	●●	H	FGF-4	●	H	Hormone (FSH)	●	H
EGFR (pTyr1045)	●●	H	FGF-6	●	H	Hormone (TSH)	●	H
EGFR (pTyr1045)/pan-EGFR	●●	H	FGF-7	●	H	HSP27	●	H
EGFR (pTyr1068)	●●	H	FGF-9	●	H	HSP70	●	H
EGFR (pTyr1068)/pan-EGFR	●●	H	FGFR1/Fibroblast Growth	●	H	HspA1A	●	M
EGFR (pTyr1086)	●●	H	Factor Receptor 1	●	H	HspB1	●	M
EGFR (pTyr1086)/pan-EGFR	●●	H	FGFR2/Fibroblast Growth	●	H	Hspb1	●	R
EGFR (pTyr845)	●●	H,M,R	Factor Receptor 2	●	H	HSV-1 IgG	●	H,M,R
EGFR (pTyr9)	●●	H,M,R	FGR / Tyrosine-protein Kinase	●	H	HSV-1 IgM	●	H
EGFR (pTyr992)	●●	H	Fgr	●	H	HSV-2 IgG	●	H
EGFR (pTyr992)/pan-EGFR	●●	H	FLRG	●	H	HSV-2 IgM	●	H
EGFR / Epidermal Growth	●●	H	FLT3	●	Rh	HTRA2	●	H,M
Factor Receptor	●	H	Flt-3L	●	H,M	HTRA2	●	R
EGFR ELISA Sample Kit	●●	H,M,R	Flt4	●	M	Human Chorionic	●	H
(ERK1/2, JNK and MAPK)	●●	H,M,R	Flunitrazepam	●	H	Human Growth Hormone	●	H
EG-VEGF	●	H	Follicle Stimulating	●	H	HVEM	●	H
ENA-78	●	H	Follistatin	●	H	I-309	●	H
Endocan	●	M	FOLR1	●	H	IBP-1	●	M
Endoglin	●	H,M	Fractalkine	●	H,M,R	ICAM-1	●	M
Endostatin	●	H	Free Estriol	●	H	ICAM-1	●	R
Eotaxin-1	●	H,M	Free Prostate Specific	●	H,M	ICAM2	●	H
Eotaxin-2	●	H,M	Free Testosterone	●	H	ICAM3	●	H
Eotaxin3	●	H	Free Thyroxine (fT4)	●	H	IFN alpha	●	H
EPHA1 / Ephrin Type-A	●	H	Free Triiodothyronine (fT3)	●	H	IFNgamma	●	H,M,Rh,C,E,S,P,B,F
Receptor 1	●	H	FRK/Tyrosine-protein Kinase FRK	●	H	IFNgammaR1	●	M
EPHA2 / Ephrin Type-A	●	H	FSH	●	H	IFN-R-2	●	H
Receptor 2	●	H	Furin	●	H	IGF-1R	●	H,M,R
EPHA3 / Ephrin Type-A	●	H	FYN/Tyrosine-protein Kinase Fyn	●	H	IGF2R	●	H
Receptor 3	●	H	Galectin1	●	M	IGFBP-1	●	H,R
EPHA4 / Ephrin Type-A	●	H	Galectin-3	●	H,M	IGFBP-2	●	H,M
Receptor 4	●	H	Galectin-7	●	H,M	IGFBP-2	●	R
EPHA5 / Ephrin Type-A	●	H	Gas1	●	H,M	IGFBP-3	●	H,M,P
Receptor 5	●	H	GAS6	●	M	IGFBP-4	●	H,R
EPHA6 / Ephrin Type-A	●	H	GASP1	●	H	IGFBP-5	●	H,M,R
Receptor 6	●	H	GASP2	●	H	IGFBP-6	●	H,M,R
EPHA7 / Ephrin Type-A	●	H	Gastric Inhibitory Peptide	●	H,M,R	IGFII	●	M
Receptor 7	●	H	Gastrin	●	H,M,R	IgG	●	H
EPHA8 / Ephrin Type-A	●	H	GCG (1-37)	●	H	IgG1	●	H
Receptor 8	●	H	GCG (7-37)	●	H	IL-1 alpha	●	H,M,R
EPHB1 / Ephrin Type-B Receptor 1	●	H	GCG (9-36)	●	H	IL-1 beta	●	H,M,R,P
EPHB2 / Ephrin Type-B Receptor 2	●	H	GCP-2	●	H	IL-1 R4	●	H
EPHB3 / Ephrin Type-B Receptor 3	●	H	G-CSF	●	H,M	IL-1 RA	●	H,M
EPHB4 / Ephrin Type-B Receptor 4	●	H	GCSFR	●	H	IL-10	●	H,M,E,P,R,C,F
EPHB6 / Ephrin Type-B Receptor 6	●	H	GDF-15	●	H	IL-10 R beta	●	H
Epigen	●	M	GDF2	●	H	IL-11	●	H,M
Epiregulin	●	M	GDNF	●	H	IL-12	●	P
EPO	●	H	GH	●	H	IL-12 alpha p19	●	M
EPOR	●	H	Ghrelin	●	H,M,R	IL-12 p40	●	H
ErbB2	●●	H	GITR	●	H,M	IL-12 p40/70	●	M
ErbB3	●●	H	GITR L	●	H,M	IL-12 p70	●	H,Rh
ERBB4 / Receptor Tyrosine-	●	H	GLP-1	●	H,M,R	IL-12B	●	P,C,F
protein Kinase erbB-4	●	H	Glucagon	●●	H,M,R	IL-13	●	H,M,R,P
Erk1 (pThr202/pTyr204) and	●	H,M,R	GM-CSF	●	H,M,R,PF	IL-13 Ra2	●	H
Erk2 (pTyr185/187)	●	H,M,R	Gonadotropin (hCG)	●	H	IL-13Ra1	●	H
Erk1 (pThr202/pTyr204) and	●	H,M,R	gp130	●	M	IL-15	●	H,M,Rh
Erk2 (pTyr185/187)/pan-Erk1/2	●	H,M,R	Granzyme B	●	M	IL-16	●	H,Rh
ERK1/2 (pThr202/pTyr204)	●●	H,M,R	GRO-alpha	●	H	IL-17 R	●	H
E-Selectin	●	H,M	H60	●	M	IL-17A	●	H,M,P
Estradiol	●●	H,M,R	HAI1	●	M	IL-17B	●	H,M
FABP-1	●	H,R	HAVcr-1	●	H,R	IL17BR	●	M
FABP2	●	H	HB-EGF	●	H	IL-17BR	●	H
FABP3	●	H	HCC-1	●	H	IL17E	●	M
FAP	●	H	HCC-4	●	H	IL17F	●	M
Fas	●	H,M,F	hCG	●	H	IL-17F	●	H
FasL	●	H,M,R	HCK/Tyrosine-protein Kinase HCK	●	H	IL-18	●	H,M,P
Fc-gamma-RIIb	●	M	Helicobacter pylori IgA	●	H	IL-18 Bpa	●	H

Sandwich	●	Phosphorylation	●	Equine	E	Mouse	M	Rhesus	Rh
EIA	●	Bovine	●	Feline	F	Porcine	P	Sheep	Z
Cell-Based	●	Canine	●	Human	H	Rat	R	Sigmodon	S

Target Molecule	Application	Species	Target Molecule	Application	Species	Target Molecule	Application	Species
IL-18 R beta	●	H	JAMA	●	M	MFG-E8	●	M
IL-1beta	●	H,C,M,F,Rh	JNK (pThr183/pTyr185)	●	H,M,R	MICA	●	H
IL-1F10	●	H	KC	●	M	MICB	●	H
IL-1F5	●	H	Kdr	●	M	MIF	●	H
IL-1F6	●	H	KLK-10	●	H	MIG	●	H,M
IL-1F7	●	H	KLK-14	●	H	MIP-1 alpha	●	H,M
IL-1F8	●	H	KLK-6	●	H	MIP-1 beta	●	H
IL-1F9	●	H	Kremen1	●	M	MIP-1 delta	●	H
IL-1R3	●	H	Lactoferrin	●	H	MIP-1 gamma	●	M
IL-1R5	●	H	LAG3	●	H	MIP-2	●	M
IL-1R6	●	R	Layilin	●	H	MIP-3 alpha	●	H,M
IL-1ra	●	H	LCK/Tyrosine-protein Kinase Lck	●	H	MIP-3 beta	●	H,M
IL-1RA	●	E	LDLR	●	H	MIP3alpha	●	H
IL-1RL2	●	H	Legumain	●	H	Mitochondrial Antibody	●	H
IL-1sRI	●	H	Leptin	●	H,M,R	MMP-1	●	H
IL-1sRII	●	H	LeptinR	●	M	MMP-10	●	H
IL-2	●	H,M,R,C,F,E,B	LH	●	H	MMP-13	●	H
IL-20	●	H,M	LIF	●	H	MMP-2	●	H,M
IL-21	●	H,M	LIGHT	●	H	MMP-3	●	H,M
IL-21R	●	H	Limitin	●	M	MMP-7	●	H
IL-22	●	H,P	LIMP-II	●	H	MMP-8	●	H,R
IL-23	●	H	Lipocalin2	●	H,M,R	MMP-9	●	H
IL-24	●	H	Livin	●	H	Morphine Specific Direct	●	H
IL-28	●	M	LIX	●	M	MPIF-1	●	H
IL-28A	●	H	LIX	●	R	MPO	●	M
IL-29	●	H	LOX1	●	H,M	MSP	●	H
IL-2R alpha	●	H,M	LSD	●	H	Mumps IgG	●	H
IL-2R gamma	●	H	L-Selectin	●	H,M,R	Mumps IgM	●	H
IL-3	●	H,M	Lta	●	R	MUSK / Muscle, Skeletal	●	H
IL-31	●	H	LTK / Leukocyte Tyrosine Kinase Receptor	●	H	Receptor Tyrosine-protein Kinase	●	H
IL33	●	M	Luteinizing Hormone (LH)	●	H	Mycoplasma IgG	●	H
IL-33	●	H	Lymphotoctin	●	M	Mycoplasma IgM	●	H
IL-34	●	H	Lymphotoctin	●	H	Myeloperoxidase	●	H
IL-3R alpha	●	H	LYN/Tyrosine-protein Kinase Lyn	●	H	Myoglobin	●	H
IL3Rbeta	●	M	Lysozyme	●	H	NAP-2	●	H
IL-4	●	H,M,P,R,E,S,Rh,F	LYVE-1	●	H	NCAM1	●	H
IL-5	●	H,M,F,Rh	MADCAM1	●	M	Nephrysin	●	H,M
IL-5R alpha	●	H	MAG	●	R	Nesfatin	●	H,M,R
IL-6	●	H,M,P,C,Rh	MAP2K1	●	H	Neurokinin-A	●	H,M,R
IL-6 p53 T	●	R	MAPK1/MAPK3	●	H	Neurokinin-B	●	H,M,R
IL-6 sR	●	H	MAPK14/Mitogen-activated Protein Kinase 14	●	H	Neuron Specific Enolase	●	H
IL6R	●	M	MAPK8/Mitogen-activated Protein Kinase 8	●	H	Neuropeptide-Y	●	H,M,R
IL-7	●	H,M	Marapsin	●	H,M	NFRSF10D	●	R
IL7Ralpha	●	M	Mast/stem Cell Growth Factor Receptor	●	H	NGF R	●	H
IL-8	●	H,P,C,F	MATK / Megakaryocyte-associated Tyrosine-protein Kinase	●	H	Nidogen-1	●	H
IL-9	●	H,M	MBL	●	H	Nope	●	M
Immunoglobulin A	●	M	MBL2	●	M	NOTCH-1	●	H
Immunoglobulin D	●	M	MCP-1	●	H,M,R,C	NOV	●	H,M
Immunoglobulin E	●	M	MCP-2	●	H	NrCAM	●	H
Immunoglobulin E (IgE)	●	H	MCP-3	●	H	NRG1-beta 1	●	H
Immunoglobulin G Subclass 1	●	M	MCP-4	●	H	NT-3	●	H
Immunoglobulin G Subclass 2a	●	M	MCP-5	●	M	NT-4	●	H
Immunoglobulin G Subclass 2b	●	M	M-CSF	●	H,M	ObeSTATin	●	H,M,R
Immunoglobulin G Subclass 4	●	M	MCSFR	●	H	OPG	●	H,M
Immunoglobulin M	●	M	MDC	●	H,M	Opiates	●	H
INHBA	●	M	Measles (Rubeola) IgG	●	H	OPN	●	H,M
Inhibin-B	●	H,M,R	Measles (Rubeola) IgM	●	H	OSM	●	H
INS	●	B	Mek (pSer217/221)	●	H,M,R	Osteoactivin	●	H,M
INS1	●	R	Mek (pSer217/221)/pan-Mek	●	H,M,R	p22 BID	●	M
INSR	●	H	Mer	●	H	p27	●	H
Insulin	●	H,P	Mesothelin	●	H	p38 alpha (pThr180/pTyr182)	●	H
Insulin-1	●	M	MET	●	C	p38 alpha (pThr180/pTyr182)/pan-p38	●	H
Intact-PTH	●	H	Met (pTyr1234)	●	H,M,R	p38 MAPK (pThr180m/pTyr182)	●	H,M,R
IP-10	●	H	Met (pTyr1234)/pan-Met	●	H,M,R	p53	●	H,M
I-TAC	●	H,H	MET/Hepatocyte Growth Factor Receptor	●	H	PAI-1	●	H
ITK/Tyrosine-protein Kinase	●	H	Meteorin	●	M	PAPP-A	●	H
ITK/TSK	●	H	Methamphetamine	●	H	PARC	●	H
JAK1/Tyrosine-protein Kinase	●	H				PCadherin	●	M
JAK1	●	H				P-Cadherin	●	H
JAK2/Tyrosine-protein Kinase	●	H				PCP Direct	●	H
JAK2	●	H				PD1	●	H
JAK3/Tyrosine-protein Kinase	●	H				PDGF R alpha	●	H
JAK3	●	H						

Sandwich	●	Phosphorylation	●	Equine	E	Mouse	M	Rhesus	Rh
EIA	●	Bovine	B	Feline	F	Porcine	P	Sheep	Z
Cell-Based	●	Canine	C	Human	H	Rat	R	Sigmodon	S

Target Molecule	Application	Species	Target Molecule	Application	Species	Target Molecule	Application	Species
PDGF R beta	●	H	SDF-1 alpha	●	H,M	TLR2	●	H
PDGF-AA	●	H,R	SDF1beta	●	H	TNF Beta	●	M
PDGF-AB	●	H	Secretory IgA	●	H	TNF-alpha	●	PR,H,M,Rh,C,B
PDGFB	●	C	SerpinA4	●	H	TNF-beta	●	H
PDGF-BB	●	H,F	sFRP3	●	H	TNFRSF10A	●	M,R
PDGF-beta	●	P	sgp130	●	H	TNFRSF10B	●	R,M
PDGFRA/Platelet-derived	●	H	SHBG	●	H	TNFRSF10C	●	M,R
Growth Factor Receptor Alpha	●	H	Sheep Cortisol	●	Z	TNFRSF10D	●	M
PDGFRB/Platelet-derived	●	H	ShhN	●	H,M	TNFRSF17	●	H
Growth Factor Receptor Beta	●	H	siCAM-1	●	H	TNFRSF1A	●	R
PECAM-1	●	H,P	SIGIRR	●	H	TNFRSF21	●	M,R
Pepsinogen I	●	H	Siglec-5	●	H	TNFRSF9	●	H
Peptide YY	●	H,M,R	Siglec-9	●	H	TNFSF13	●	H
Periostin	●	M	Sm Autoantibody	●	M	TNFSF4	●	M
PF-4	●	H,M	SMAC	●	H	TNK2 / Activated CDC42	●	H
PG-II, Pepsin,	●	H	SOST	●	H	Kinase 1	●	H
PGRPs	●	H	SPINT1	●	H	Total Estrogens	●	H
PLGF	●	H	SPINT2	●	H	Toxoplasma IgA	●	H
PLGF-2	●	M	SSA Autoantibody	●	H	Toxoplasma IgG	●	H
PPY	●	H	SSB Autoantibody	●	H	Toxoplasma IgM	●	H
PRDC	●	M	Sssa1	●	M	TPO	●	H,M
proBNP	●	H	SSSCA1	●	R	TRAIL	●	M
Procalcitonin	●	H	STAT ELISA Sample Kit (STAT1, STAT3, STAT5)	●	H,M,R	TRAIL R2	●	H
proCathB	●	H	STAT1 (pSer727)	●	H	TRAIL R3	●	H
Progesterone	●	H,M,R	STAT1 (pSer727)/pan-STAT1	●	H	TRAIL R4	●	H
Progesterone (Saliva)	●	H	STAT1 (pTyr701)	●	H	TRAILR1	●	H
Pro-Glucagon	●	H,M,R	STAT1 (pTyr701)/pan-STAT1	●	H	TRANCE	●	M
Progranulin	●	M	STAT3 (pTyr705)	●	H,M,R	Trappin-2	●	H
Pro-Insulin	●	H	STAT3 (pTyr705)/pan-STAT3	●	H,M,R	TREM1	●	M
Prolactin	●	H,M	STAT4 (pTyr693)	●	H	TREM-1	●	H
Prolactin R	●	R	STAT5 (pTyr694)	●	H	Treponema Pallidum IgG	●	H
pro-MMP-9	●	M	STAT6 (pTyr641)	●	H	Treponema Pallidum IgM	●	H
Prostasin	●	H,M	sTNFRI	●	H,M	Treponema Pallidum Total	●	H
Prss22	●	M	sTNFRII	●	H,M	Tricyclis Kit	●	H
PSA-free	●	H	Syndecan1	●	H	Triiodothyronine (T3)	●	M,R
PSA-total	●	H	TACE	●	H	Triiodothyronine (T3)	●	H
P-Selectin	●	H,M	TACI	●	H,M	TROP1	●	H
PTH / Parathyroid Hormone	●	H,M,R	TARC	●	H,M	Troponin	●	H
PTK2 / Focal Adhesion	●	H	TCA-3	●	M	Troponin I	●	H
Kinase 1	●	H	TCK-1	●	M	Troponin T	●	H
PTK2B / Protein-tyrosine	●	H	TCK-1	●	R	TROY	●	H,M
Kinase 2-beta	●	H	TECK	●	H,M	TSH	●	H
Ptx3	●	M	Testican-3	●	M	TSLP	●	H,M
RAGE	●	H,M,C,R	Testosterone	●	H,M,R	TYRO3 / Tyrosine-protein	●	H
RANK	●	H	TF	●	H	Kinase Receptor TYRO3	●	H
RANTES	●	H,M,F	TFPI	●	H	Ubiquitin1	●	H
RBP-4	●	H	TGF-alpha	●	H	uPA	●	H
Renin 1	●	M	TGF-b RIII	●	H	uPAR	●	H
Resistin	●	H,M	TGF-beta 1	●	H	Uromodulin	●	H
Resistin	●	H,M,R	TGF-beta 2	●	H	Vaspin	●	H,M,R
Resistin-like Protein alpha	●	H,M,R	TGF-beta RII	●	H	VCAM-1	●	H,M
RET	●	H	TGF-beta-1	●	M,P	VEGF	●	H,M,C
Retinol Binding Protein 4	●	H,M,R	THBD	●	H	VEGF R1	●	M
RNP/Sm Autoantibody	●	H	THBS1	●	H	VEGF-A	●	H,M,R
ROR1	●	H	THBS2	●	H	VEGF-C	●	H
ROR2	●	H	Thyroglobulin	●	H	VEGF-D	●	H
ROS1	●	H	Thyroid Peroxidase	●	H	VEGF-R2	●	H
Rubella IgG	●	H	Thyroid Peroxidase IgG	●	H	VEGF-R3	●	H
Rubella IgM	●	H	Thyroid Stimulating	●	H	Visfatin	●	H,M,R
RYK	●	H	Thyroxine (T4)	●	H	vWF	●	H
S100A8	●	H	Tie-1	●	H	VZV IgG	●	H
SAA	●	H	Tie-2	●	H	VZV IgM	●	H
Salmonella Typhi IgG	●	H	TIM1	●	M,R	WIF1	●	H
Salmonella Typhi IgM	●	H	TIMP1	●	H,M,P,F,R	WISP-1	●	H
SCF	●	H,M,C,F	TIMP2	●	H,M,P,C	XIAP	●	H,M,R
SCFR	●	H	TIMP-4	●	H	Zinc-binding alpha-2	●	H,M,R
Scl-70 Autoantibody	●	H				glycoprotein	●	H,M,R

Sandwich	●	Phosphorylation	●	Equine	E	Mouse	M	Rhesus	Rh
EIA	●	Bovine	B	Feline	F	Porcine	P	Sheep	Z
Cell-Based	●	Canine	C	Human	H	Rat	R	Sigmodon	S

Enabling Science to
Improve the Quality of Life

Order/Customer Service: sigma-aldrich.com/order
 Technical Service: sigma-aldrich.com/techservice
 Development/Custom Manufacturing Inquiries **SAFC**® safcglob@sigma-aldrich.com
 Safety-related Information: sigma-aldrich.com/safetycenter

World Headquarters
3050 Spruce St.
St. Louis, MO 63103
(314) 771-5765
sigma-aldrich.com

©2015 Sigma-Aldrich Co. LLC. All rights reserved. Sigma, SAFC, Sigma-Aldrich, Aldrich and Supelco are trademarks of Sigma-Aldrich Co. LLC, registered in the US and other countries. Fluka is a trademark of Sigma-Aldrich GmbH, registered in the US and other countries. Sigma-Aldrich, Sigma, Aldrich, Supelco, Fluka and SAFC brand products are sold by affiliated Sigma-Aldrich distributors. Purchaser must determine the suitability of the product(s) for their particular use. Additional terms and conditions may apply. Please see product information on the Sigma-Aldrich website at www.sigmaaldrich.com and/or on the reverse side of the invoice or packing slip.

PSJ
82471
1095